

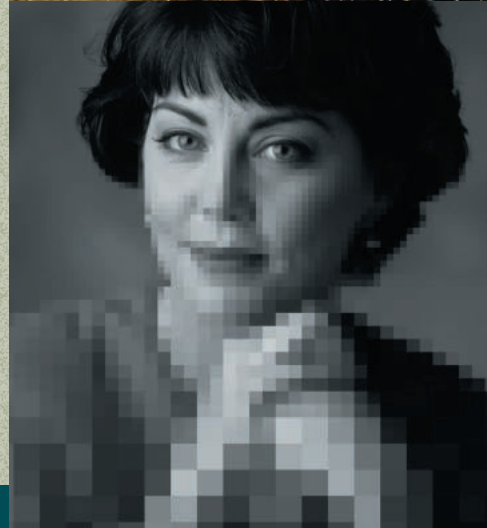
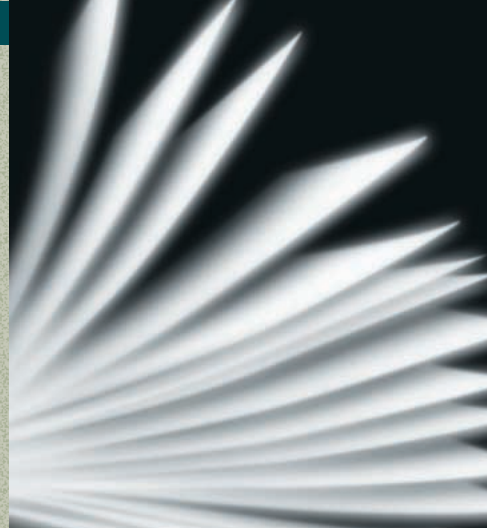
SHARP®

TAKE YOUR BUSINESS
TO A BETTER PLACE.



Digital
IMAGER™
Advanced Workgroup System

AR-235/275



WELCOME TO THE SHARP NETWORKPLACE™.

A new environment where the network and workplace intersect—linking multiple digital technologies that transform the workplace—and create more business power, more convenience, and greater productivity.

Where people are empowered to combine their knowledge and intelligence, to build upon each other's ideas.

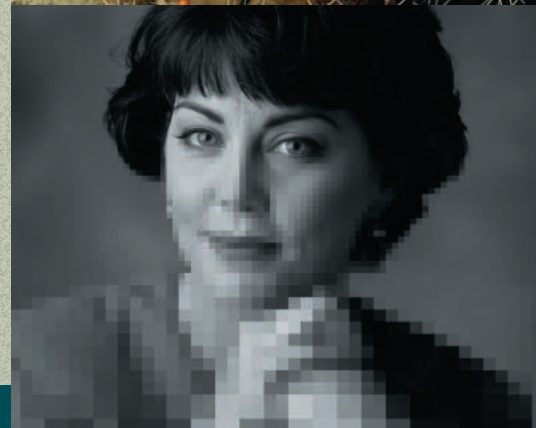
Central to the swift operation of the Networkplace is Sharp's Advanced Digital Document System, the Imager™.

With digital copy, print, scan, fax, and document finishing capabilities, it provides simpler and faster ways to access, produce, change, process, and distribute documents. All to raise productivity and your documents to a whole new level.

SHARP®



COPY
PRINT
SCAN
FAX



THE SHARP AR-235/275 IMAGER™ DELIVERS ADVANCED FEATURES FOR INCREASED PRODUCTIVITY

Designed for busy workgroups and office enterprises, the AR-235/275 Imager offers the advanced digital technology needed to meet the challenges of today's demanding business environment. This multi-faceted performer delivers an impressive array of standard features with the ability to add multifunctional capabilities as your business grows. With innovative modular options, you can transform the AR-235/275 Imager into a networkable document management system with network printing, scanning, scan to e-mail, fax, and finishing capabilities. With all these versatile features, proven performance, and Sharp's award-winning reliability, the AR-235/275 Imager delivers the functionality your business needs today—with the flexibility you'll need tomorrow.



Many office workgroups would choose the Sharp AR-235/275 Imager for its copier performance alone. When you consider that it can also handle all the network printing, network scanning and finishing needs of a busy workgroup at the same time, the Sharp AR-235/275 Imager is the clear choice.

CHANGE THE WAY YOUR OFFICE WORKS WITH ADVANCED DIGITAL TECHNOLOGY FROM SHARP

An efficient performer

At a quick 23/27 copies per minute, the AR-235/275 Imager can keep up with even the busiest workgroups. With a total online paper capacity of 2,100 sheets and standard 32 MB memory (expandable to 272 MB), the AR-235/275 Imager can handle large copy and print jobs with ease. Even automatic feeding won't slow you down with the optional 30-sheet R-SPF (Reversing Single Pass Feeder) or the optional Single Pass Feeder.

Outstanding image quality

The AR-235/275 Imager's digital engine produces output at true 1200 dpi resolution for prints with exceptional clarity and detail. With 256 shades of grayscale, the AR-235/275 Imager produces exceptional renditions of photographs,

illustrations and graphics. It even offers a mode to optimize output from combined photos and text.

The AR-235/275 Imager also produces multiple page sets in a snap. Each set is output as soon as printing is completed, so there's no need to wait for the entire job to print to view a completed set. And since there are no sorter bins to empty, there is virtually no limit to the size of the set, or the number of sets you can create.

Enhanced office functionality with network connectivity

The Sharp AR-235/275 Imager won't come up short even against the fastest growing needs. The modular design of the AR-235/275 Imager allows you to add fax, scanning, and desktop print capabilities, providing seamless office integration and versatility—enabling your office to operate more efficiently.

You can easily transform the AR-235/275 Imager into an efficient network printer with the optional AR-P11 print controller. The high-performance laser engine produces prints at 1200 dpi resolution for ultra

crisp text and incredibly detailed 256-level grayscale images. With "scan once, print many" technology, the AR-235/275 Imager digitally scans your originals in one pass—improving productivity and saving valuable time. Plus, with the convenience of network connectivity, you can print right from your desktop.

Efficient network scanning and convenient faxing

Add even more functionality to your office workflow with the optional AR-NS2 Network Scanner Expansion Kit and AR-NC5J Network Card. In seconds, easily scan documents to your e-mail, desktop or to file for seamless document transmission between users and platforms. A scan resolution of 600 dpi produces crisp, sharp text and graphics. And with scan-to-e-mail technology, you can instantly post scanned documents to your web browser or transfer over the internet at the touch of a button!

With a 33.6 Kbps modem, JBIG compression, and delayed transmission, the AR-235/275 Imager makes network scanning and faxing convenient and efficient.



▲ The optional Finisher/Sorter with Offset Stacking and Stapling allows you to collate and staple multiple-page documents.

What's more, simply add the optional Job Separator Tray for easy retrieval of separate fax and print jobs.

Advanced finishing for the ultimate in convenience

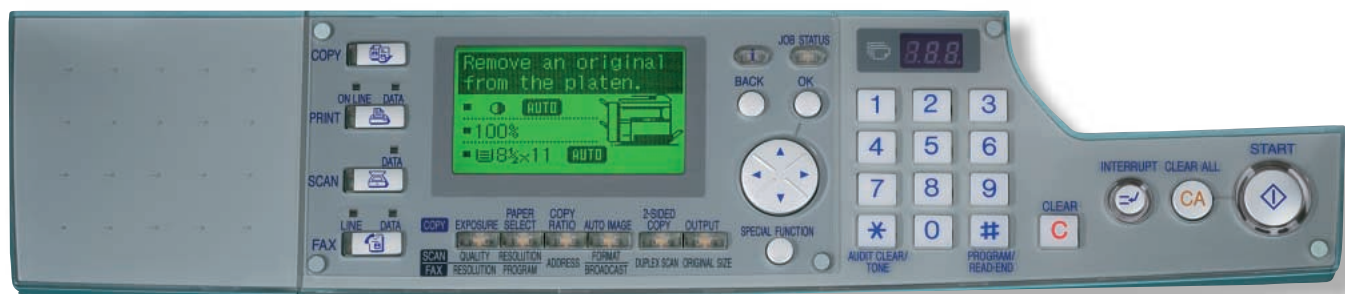
The AR-235/275 Imager offers advanced finishing capabilities to make your documents look professional. The optional AR-FN5 finisher/sorter offers automated document assembly for high-productivity environments. Collating, sorting and stapling are completed automatically—all you have to do is pick up your finished sets from the tray. Plus, you can access finishing functions right from the convenience of your desktop PC—putting productivity at your fingertips!



▲ Load up to 2,000 sheets of statement to ledger-size paper in the adjustable drawers for maximum efficiency.

USER-FRIENDLY CONTROL PANEL

▼ The easy-to-use LCD panel easily guides users through features and options with simple prompts. The animated display logically leads you step by step through the selections. To avoid costly mistakes, you can easily confirm your selections with the touch of a key before you begin printing.

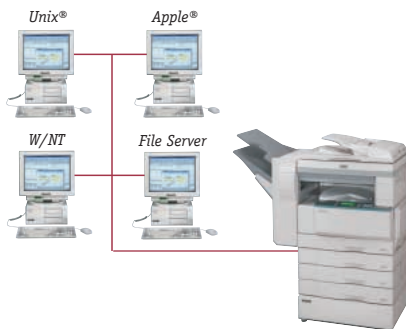


INNOVATIVE MODULAR DESIGN MAKES IT EASY TO TRANSFORM THE AR-235/275 IMAGER INTO A COMPLETE DOCUMENT MANAGEMENT SOLUTION.

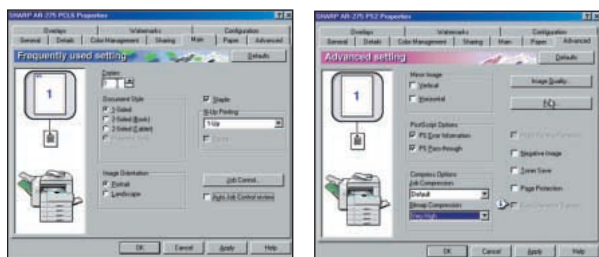
NETWORK PRINTING & CONNECTIVITY

Sharp Embedded Print Controller (optional)

The AR-P11 print controller provides increased productivity with the convenience of network connectivity. With 1200-dpi quality laser printing, the AR-235/275 Imager is perfect for workgroups and small businesses.



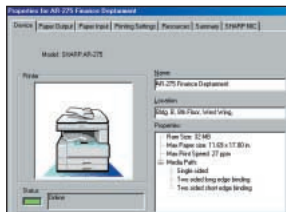
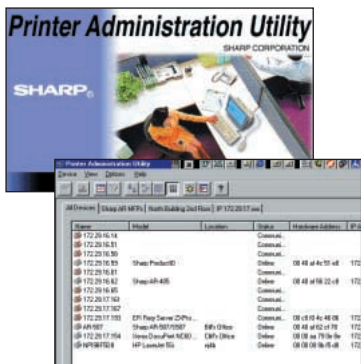
▼ PCL5e/PCL6 Print Drivers



Sharp Print Utilities

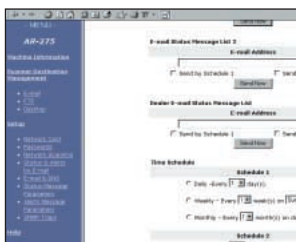
► Includes **Printer Administration Utility Software** for Network Administrators to monitor any SNMP-compliant printer on the network

▼ **Printer Status Monitor**, an application which enables users to view network printer conditions through an easy-to-use graphical interface. It even notifies you when your job is complete!



Sharp Remote E-mail Diagnostics (R.E.D.)

- Advanced communication system for the network environment that allows information and device status to be sent over the Internet
- Use as a support tool for administrators inside a facility and for monitoring by a Sharp Authorized Dealer
- Provide the highest level of product support by sending an e-mail message at a set time schedule, or, when a certain event has occurred



NETWORK SCANNING & FAXING

Optional network scanning adds extra functionality to your office workflow and maximizes productivity. Easy-to-use software and utilities make set-up a breeze.

Sharp AR-NS2 Network Expansion Kit

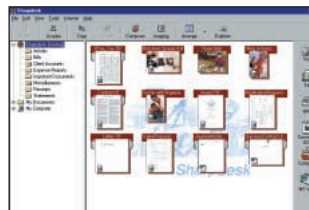
- Scan documents directly to your desktop, file server or e-mail.



◀ Simple prompts guide users through the scanning process. You can select options such as resolution, file format and the scan destination.

Sharpdesk™ 2.0

- Software features include scanning, OCR, Image Viewer and more. A document can be e-mailed or posted to the web, or printed and professionally finished. You can also file, OCR, print or link to your fax server right from your desktop.



◀ Sharpdesk software's easy-to-use graphical interface enables users to manage, compose, store and send documents directly from their desktop PCs.

Fax Kit

- With the optional 33.6 modem fax kit, documents can be transmitted in less than 3 seconds* utilizing JBIG compression
- 50 rapid and 300 speed dials are included allowing for fast transmission of documents to frequently dialed numbers

CONVENIENT FINISHING



Multiple pages per sheet



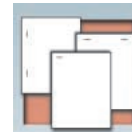
Make pamphlets easily



Automated page editing



Print on both sides



Auto stapler



Each job neatly separated

AR-235/275 IMAGER SPECIFICATIONS

GENERAL SPECIFICATIONS

| | |
|------------------------|--|
| Type: | Console |
| Copy System: | 4-Beam Laser Electronic |
| Originals | Sheets, bound document, photographs |
| Original Size: | Max. 11" x 17" |
| Copy Sizes: | Max. 11" x 17"; Min. 5.5" x 8.5" |
| Copying Speed: | 23/27 ppm (8.5" x 11" at 100% ratio at 600 x 1200 dpi) 13.5 ppm (8.5" x 11" at 100% ratio at 1200 x 1200 dpi) |
| Continuous Copy: | Max. 999 |
| Copy Ratio: | 25%-400% in 1% increments Fixed Presets: 25%, 50%, 64%, 77%, 95%, 100%, 121%, 129%, 141%, 200%, 400%, 800% |
| Printing Resolution: | 1200 x 1200 dpi (Super Photo Mode) |
| Gradation: | 256 levels |
| Duplexing: | Standard (trayless) |
| First Copy Time: | Approx. 4.8 seconds |
| Warm-Up Time: | Approx. 40 seconds |
| Memory Size: | 32 MB expandable to 288 MB |
| Original Feed System: | Optional 30-sheet Reversing Single Pass Feeder (R-SPF) Optional Single Pass Feeder (SP4) |
| Memory Capacity: | 1530 letter-size pages (maximum) |
| Compression Method: | JBIG |
| Copy Paper Feed: | Two 500-sheet adjustable paper cassettes (standard) 100-sheet Bypass Tray (standard) Optional 30-sheet RSPF (or SPF) Two 500-sheet paper cassettes (optional) |
| Optional Output: | Finisher/Sorter (AR-FN5) |
| Fusing System: | Heat Rollers |
| Developer System: | Magnetic Brush Development |
| Exposure System: | Moving optical source, slit exposure (stationary platen) with automatic exposure function |
| Light Source: | Xenon Lamp |
| Required Power Supply: | 120 Volts, 60Hz |
| Power Consumption: | Maximum 1.5 kw |
| Dimensions: | 24.5" x 23" x 25.5" (w x d x h) |
| Weight: | Approx. 92.2 lbs. |

OPTIONAL EMBEDDED CONTROLLER SPECIFICATIONS

| | |
|----------------------------------|---|
| PDL Support: | PCL5e/PCL6 (standard) Emulated PostScript 3 (optional) |
| Memory: | 32 MB Standard; 288 MB Max. |
| CPU: | 200 MHz |
| Client Operating System Support: | Windows® 95/98/2000/ME, Windows® NT 4.0, Netware®, Macintosh® OS 8.51 or later (with optional PS3 kit) |
| Protocol Support: | TCP/IP, IPX/SPX, EtherTalk, NetBEUI, Peer-to-Peer |
| I/O Interface: | Parallel, 10/100 BaseTX |

Design and specifications are subject to change without notice.
Sharp is a registered trademark of Sharp Corporation.
All trademarks and registered trademarks are of their respective holders.

*with ITU-T No.1 chart standard resolution, SUPER G3 mode,
33,600 bps, JBIG compression

HIGHLIGHTS:

- 23/27 ppm Copy/Print Speed
- 2,100 Sheets Total Online Paper Capacity
- Standard Duplexing
- True 1200 dpi Resolution
- Standard 16 MB Copier Memory (Expandable to 272 MB)
- Optional Scanning, Faxing and Network Printing
- Optional Finisher/Sorter with Offset Stacking and Stapler
- Optional Job Separator Tray
- Optional Bar Code Font Kit
- Scan Once, Print Many Technology

FEATURES:

- Two Standard 500-Sheet Paper Cassettes
- 100-Sheet Bypass Tray
- 30-Sheet Optional RSPF (or SPF)
- 25-400% Zoom Range (1% increments)
- Maximum Monthly Volume: 50,000 Copies/Prints
- Continuous Copy: 999 Maximum
- 20 Account Numbers
- Easy-to-Use LCD Control Panel
- 256 Level Grayscale

OPTIONAL CONTROLLER FEATURES:

- 32 MB Printer Memory, Expandable to 288 MB
- PCL5e/PCL6 PDL Support (Standard)
- PostScript Level 3 Emulation (Optional)
Supports Macintosh® 8.51 or later
- Standard Windows® 95/98/ME, Windows® 2000, Windows® NT, Unix® Client Support

OPTIONAL FAX FEATURES:

- Less than 3 Second Transmission Time*
- 33.6 Modem Speed
- JBIG Compression
- 50 Rapid and 300 Speed Dial Keys
- Duplex Scanning for Easy Faxing of Two-Sided Documents (R-SPF Required)
- 2 MB Fax Memory Standard (Upgradable to 10 MB with Options)

OPTIONAL SCAN FEATURES:

- 600 dpi Network Scanning
- Scan to E-mail Technology (Via Sharpdesk™ Utility)

